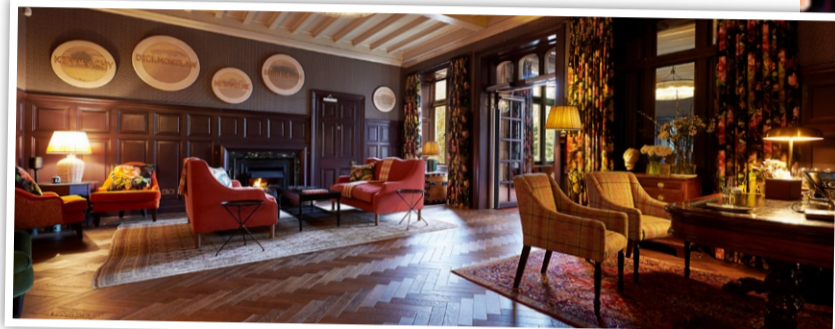


Welcome to court Cromlix

Kim unveils ace results of luxury hotel's makeover



Well played: The light-filled restaurant and, below, cosy lounge



Top service: Kim Murray with her staff at revamped Cromlix

SIR Andy Murray's wife Kim has unveiled the stunning results of the three-month refurbishment project at the couple's luxury Cromlix House hotel.

Kim took charge of overseeing the redesign – a move which saw the walls, floors and 'everything in-between' completely renovated.

The five-star hotel sprawls across 34 acres in Perthshire near the tennis star's home town of Dunblane.

Images show Kim, 35, and her team posing

By **Piriyanga Thirunimalan**

after the hotel reopened following the radical makeover. The renovations saw everything from the lounge areas to bedrooms redesigned with the aim of giving it a 'generous helping of drama' and 'sense of humour'.

Floral wallpaper and curtains feature in many of the rooms, while chandeliers and fairy lights hang in the newly designed restaurant.

The hotel worked with interior designer Suzanne Garuda for the revamp. She said: 'We have made things somewhat less traditional whilst retaining the hotel's classical roots.'

The Murray family bought the property for nearly £2million in 2013 and millions were spent on refurbishments in 2014.

Last month, Sir Andy, also 35, applied to trademark the name of his hotel to give him exclusive rights to launch a range of related merchandise.

KUROSU

X	X				
			X		X
	O	O			
				O	
X	X				
			X		

Today's difficulty rating ★★★

EVERY day in the Mail you can play Kurosu, the most addictive brainteaser since Sudoku. There are only two rules:

- 1: Fill in each space with either a nought or a cross so there are no more than two consecutive noughts or crosses in any row or column. Important note: diagonals don't count.
- 2: Each row and column must contain three noughts and three crosses.

Solution on Mail Puzzles back page

PLAY more Kurosu and 47 puzzles like them every day on your smartphone or tablet with the Mail Digital Edition, your Mail newspaper on your screen. Get a trial offer today at mailpuzzles.co.uk

■ Daily Mail Kurosu Volume 1 out now! Order for £6.29 (RRP £8.99) from mailshop.co.uk/ books or call 020 3308 9193. Free p&p on orders over £20.



The Mail Prize Draw

WIN* A HYUNDAI TUCSON HYBRID

Throughout May, Mail readers will have the chance to win a TUCSON Premium 1.6T 230PS Hybrid 6AT 2WD automatic in Phantom Black.

The award-winning Hyundai TUCSON is one of the most distinctive cars on the road. The TUCSON is leading the way with a progressive design and state-of-the-art smart tech.

HOW TO ENTER

1. Register for free or log in to your account at MyMail.co.uk.
2. Enter at least one Unique Number from the back page of this paper this month.
3. Every Unique Number entered during May is one ticket into May's Prize Draw. Enter your Unique Number every day in May and get up to 31 tickets in the draw.
4. Alternatively subscribe to The Mail+ where subscribers automatically receive 31 entries into the Prize Draw.
5. Prize Draw closes at 23:59 on May 31, 2023.

RRP £37,505*



Enter now at MyMail.co.uk

TERMS & CONDITIONS: *Online access, MyMail account and Unique Number required. 18+ and full UK driving license required. Each Unique Number entered earns one ticket into this Prize Draw. This Prize Draw closes at 23:59 on Wednesday May 31, 2023. See MyMail.co.uk for full terms and conditions.